



new

EZY-Joint

for Vitrified Clay Pipes



GBH

www.gbhgroup.com.my



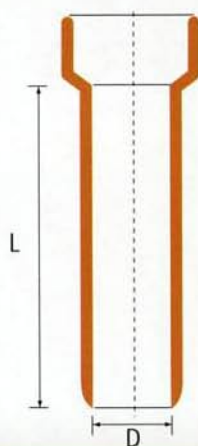
One of the World's Leading Manufacturers of VCPs

GBH is one of the world's top producers of vitrified clay pipes (VCP). Its modern manufacturing network includes two state-of-the-art facilities in Segambut, Malaysia.

The resulting economies of scale give GBH one of the world's largest manufacturing capabilities, allowing us to capitalise on growth in Southeast Asia, and to distribute our products world-wide.

GBH produces pipes and fittings ranging from 150mm to 800mm internal diameter to meet the design requirements of various countries globally. We can also customise product specifications to meet special requirements, with lengths up to 2 meters in length.





Specifications – Straight Pipe

Diameter D (mm)	Length L (m)	Diameter D (mm)	Length L (m)
150	1.25, 1.75	400	1.5, 2.0
200	2.0	450	1.5, 2.0
225	2.0	500	1.5, 2.0
250	1.5, 2.0	600	1.5, 2.0
300	1.5, 2.0	700	1.5, 2.0
375	1.5, 2.0	800	1.5, 2.0

Crushing Strength

Pipes	BS EN 295					MS 1061 : 1999				
	Crushing Strength (kN/m)					Crushing Strength (kN/m)				
	Class Number					Class Number				
Diameter DN (mm)		95	120	160	200		95	120	160	200
150	34					34				
200			24	32	40			24	32	40
225			28	36	45			28	36	45
250			30	40	50			30	40	50
300			36	48	60			36	48	60
375			45	60				45	60	
400		38	48	64	80		38	48	64	80
450		43	54	72			43	54	72	
500		48	60	80			48	60	80	
600		57	72	96			57	72	96	
700		67	84				67	84		
800		76	96				76	96		

Guaranteed Quality that Meets International Standards

GBH vitrified clay pipes utilise the latest clay blending and computerised firing technology, and our pipes are precisely engineered to meet the demand of quality standards.

The clay body in our clay pipes is turned into a glassy state (vitrified), and does not require glaze. Hence, the term "Vitrified" clay pipes. These unglazed pipes fully comply to MS 1061:1999 and BS EN 295:1991 standards.

GBH EZY-Joint Pipes : Excellent Value, Quality & Dependability

- Strong, durable design with high structural integrity for long, trouble-free usage.
- Quality unglazed pipes, manufactured using the latest technology.
- Individually checked for spigot/socket dimensions, straightness and cracks.
- Computerized precision fired to vitrification for minimum water absorption.
- Resistant to heat and chemical corrosion.



GBH VCPs are in strict conformance with:



MALAYSIA
BS EN 295 : 1991



MALAYSIA
MS 1061 : 1999



SIRIM
Certified to ISO 9001 : 2000
Cert. No. : AR 0634



Superior Pipe and Joint System that conforms to BS EN295 : 1991

EZY-Joint is designed exclusively by GBH, and offers a new standard of tight sealing and quick, hassle-free installation.

The jointing system consists of a socket section fitted with an EZY-Joint held in place by an epoxy sealant. The EZY-Joint is made of 100% natural rubber, and will not turn brittle in the sun, "creep" under pressure or deteriorate in transit or storage. The EZY-Joint is precisely fitted, providing a durable, long-lasting sealing system.



EZY Installation

EZY-Joint Vitrified Clay Pipes are specially made for fast, easy installation.

Step 1:
Clean the spigot end with a damp cloth.

Step 2:
Simply lubricate the rubber EZY-Joint ring.

Step 3:
Bring the spigot end to socket.

Step 4:
Position fit and push home from spigot end.

Advantages of EZY-Joint Pipes

EZY-Joint clay pipes can accommodate ground movement via the flexible design of the joint.

EZY-Joint pipes are user friendly.

Step 1: Clean



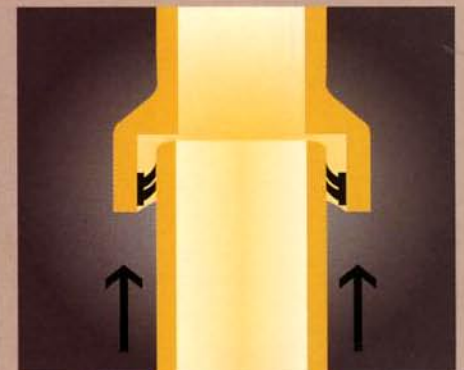
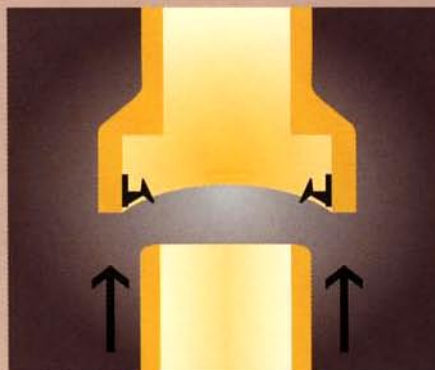
Step 2: Lubricate

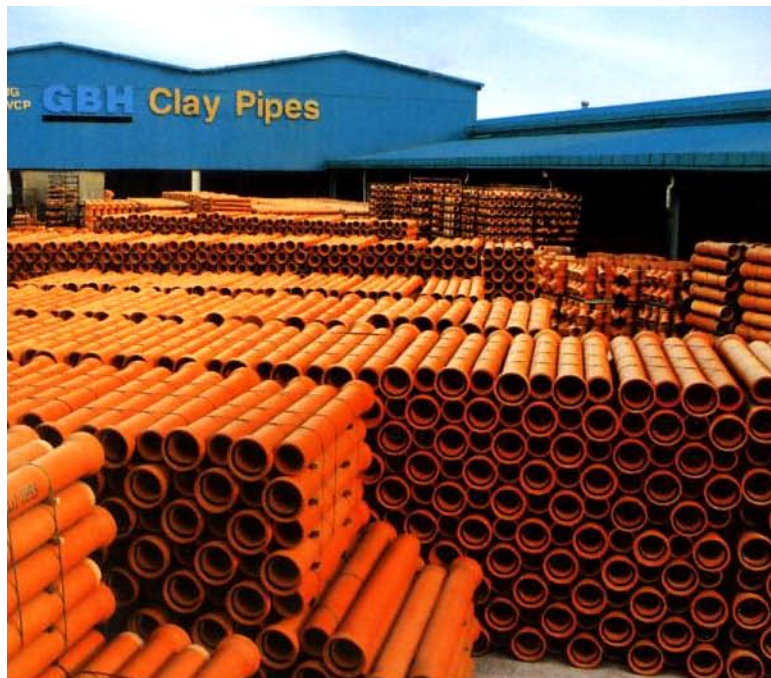


Step 3: Align



Step 4: Push In





www.gbhgroup.com.my

GBH

MS ISO 9001:2000

GBH Clay Pipes Sdn Bhd 179689-T

368, Jalan Segambut, 51200 Kuala Lumpur.

TEL • 603 6253 1581 / 603 6253 1585 / 603 6253 1588

FAX • 603 6253 1630

E-MAIL • enquiry@gbhgroup.com.my